



Typefolio Digital Foundry™

Adriane

A new version of a Classic

Swash

introduction



Typefolio Digital Foundry™

Adriane

A new version of a Classic

Swash

introduction

I The Swash version of Adriane Text features the best of the best characteristics of this lineage. Without losing the strong personality and elegant design featured in your text style, Adriane Swash brings a fancy look to this classic style. The family comes with a complete character set in UPPERCASE, Lowercase and SMALL CAPS, and the Swash option can be activated through the OpenType features panel, including glyphs initial, intermediate and final, plus a wide range of stylistic ligatures, Alternate glyphs, ornaments and languages

Typefolio Digital Foundry™
Adriane Swash



Violin
Sonata *wilhelm*

Vadim Repin & Nikolai Lugansky
play in 1st Mov. 2004 in Tokio 

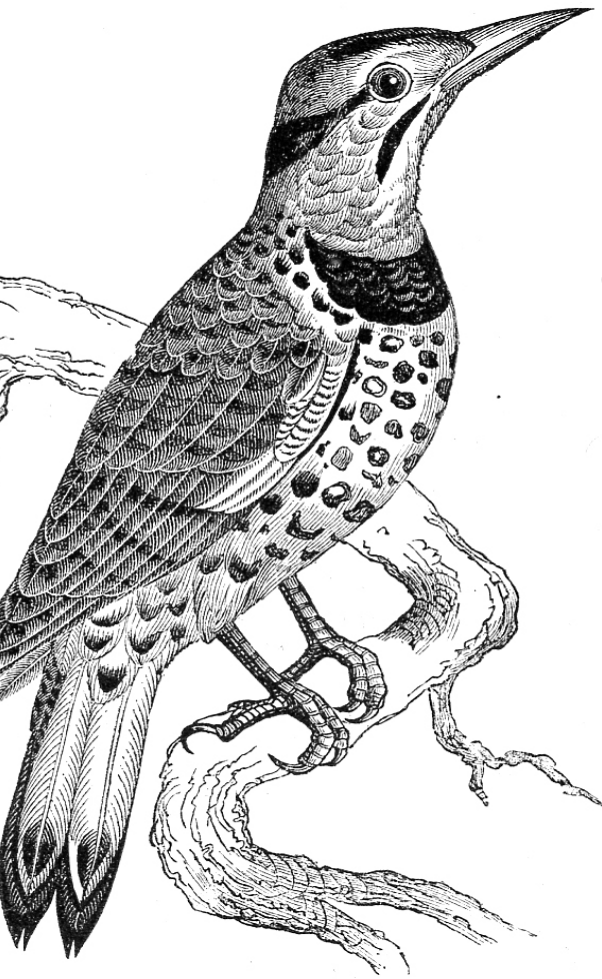
PHILHARMONICK&R

MUSICA, ARIA DIVINA, COSÌ LA SUA ANIMA È RAPITA

Nazionale Santa

Sonata in D Menor K141 ➡ Martha Argerich

Debut Paris 1850



Quintas

Carmem  *Anna Antonacci*

Don José  *Jonas Kaufmann*

Escamillo  *Idelbrando D'Arcangelo*

Micaela  *Norah Amsellem*

Boé  *Aesk Lindø*

ROYAL OPERA CHORUS

 *Xangai*



Typefolio Digital Foundry™
Adriane Swash 2013

Thank
you

ABOUT

RELEASE YEAR 2013 ¶ CHARACTER SET 1.039 Glyphs ¶ OPENTYPE FEATURES Initial Form, and Form, Swash, Ligatures, Proportional and Tabular Numerals, Alternates, Ornaments and others.

LANGUAGES SUPPORTED

Afrikaans, Albanian, Asu, Basque, Bemba, Bena, Bosnian (Latin Script), Catalan, Chiga, Congo Swahili, Cornish, Croatian, Czech, Danish, Dutch, Embu, English, Esperanto, Estonian, Faroese, Filipino, Finnish, French, Galician, Ganda, German, Gusii, Hungarian, Icelandic, Indonesian, Irish, Italian, Jola-Fonyi, Kabuverdianu, Kalaallisut, Kalenjin, Kamba, Kikuyu, Kinyarwanda, Latvian, Lithuanian, Luo, Luyia, Machame, Makhuwa-Meetto, Makonde, Malagasy, Malay (Latin Script), Maltese, Manx, Meru, Morisyen, North Ndebele, Norwegian Bokmål, Norwegian Nynorsk, Nyankole, Oromo, Polish, Portuguese, Romanian, Romansh, Rombo, Rundi, Rwa, Samburu, Sango, Sangu, Sena, Shambala, Shona, Slovak, Slovenian, Soga, Somali, Spanish, Swahili, Swedish, Swiss German, Taita, Teso, Turkish, Uunjo, Welsh, Zulu